

THOM

WE BUILD SOLUTIONS.



NEW GENERATION POUCH FILLING TECHNOLOGY.

- Spout inserting machines
- Pouch filling machines and systems
- Final packaging
- Service
- Packaging design





BEING SPECIAL IS NORMAL

Food processing is a particularly demanding sector. Extremely sensitive products have to be handled gently and economically while complying with strictest hygiene and quality standards.

THOM is a successful specialist for top quality filling and packaging machines.

The company sees its customers as cooperation partners, working together closely for the best possible solutions: efficient, precise, first-rate technology in the interests of smooth long-term operations with procedures that are easy to operate and maintain while offering convincing value for money.

STEPS TO SUCCESS

- 1 March 1968** Master smith Herbert Thom sets up his own business in Kirchlinteln
- 1972 - 1997** The firm becomes a special engineering company
- 1998** Quality management system certified to DIN EN ISO 9001
- 2001** Graduate engineer Torsten Thom takes on the company management in the second generation
- 2002** Certified to DIN 18800-7 as specialist welding company
- 2005** THOM offers complete solutions (electric design and switchboard construction)
- 2010** THOM puts together a new development team with a wealth of long-standing experience for the pouch segment and begins to develop a new generation of pouch machines

INNOVATIVE, FAST AND FLEXIBLE

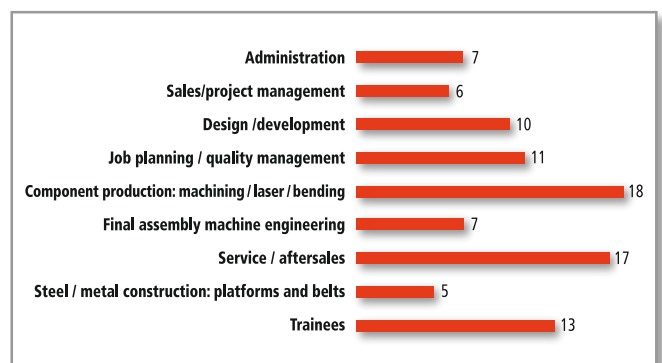
THOM's outstanding achievements result from 40 years of experience, 100 skilled employees, fast reaction times, high flexibility, proprietary mechanical and electric design, a great vertical range of production and modern machinery including laser technology. The specialists from Verden produce convincing solutions from the concept phase through to the final machine ready for production – all from a single source.

KEEPING THINGS GOING

Top quality design and workmanship are the basic prerequisites for reliable operation of a machine. Even after years of daily use under adverse conditions, this is safeguarded by a well-functioning service and maintenance concept. After initial commissioning, THOM therefore offers its customers a complete all-inn service that is as individual and efficient as the corresponding machinery.

THOM provides appropriate staff training courses for customer personnel to make them familiar with the inspection, maintenance, servicing and improvements of the machines and systems, with supplementary services available on request. As an alternative, THOM can be entrusted with complete servicing of the machine.

STAFF STRUCTURE

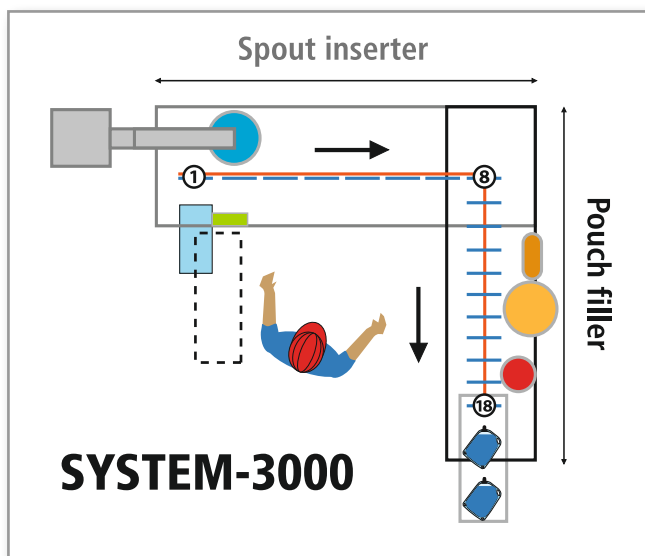
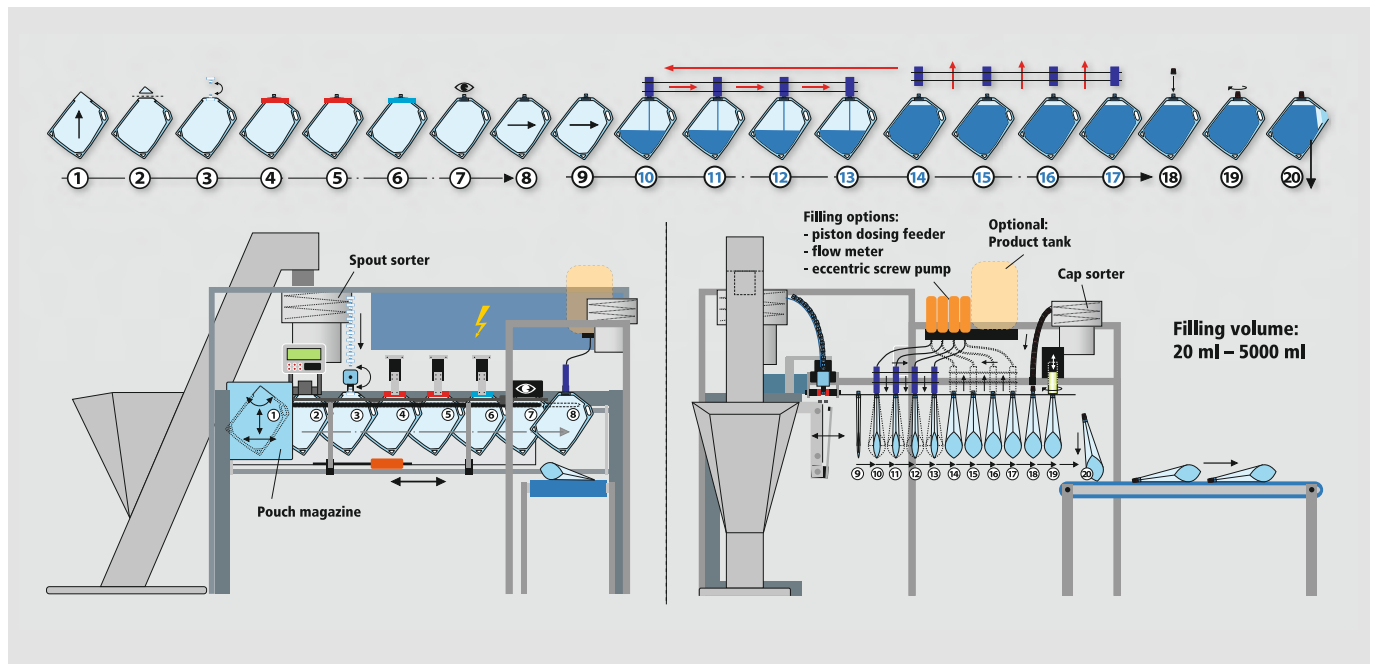


NEW GENERATION OF MACHINES

- High flexibility
- Large range of formats
- Short retooling times
- Extremely easy to operate
- High process reliability
- Modular structure
- Easy to clean
- Absolutely minimum maintenance
- Low operating costs
- Easy accessibility
- Minimum space requirements
- Easy integration of downstream systems in minimum space



40 years of experience with filling and packaging machines on the food sector have been successfully combined with more than 15 years of experience in the development of spout inserting and pouch filling machines.



- | | |
|---------------------|------------------|
| ① Pouch infeed | ⑨ Pouch handover |
| ② Corner cutting | ⑩ Filling 1a |
| ③ Insert station | ⑪ Filling 1b |
| ④ Sealing station 1 | ⑫ Filling 1c |
| ⑤ Sealing station 2 | ⑬ Filling 1d |
| ⑥ Cooling station | ⑭ Filling 2a |
| ⑦ Optional camera | ⑮ Filling 2b |
| ⑧ Pouch transfer | ⑯ Filling 2c |
| | ⑰ Filling 2d |
| | ⑱ Cap dispensing |
| | ⑲ Cap screwing |
| | ⑳ Pouch output |



THOM Metall- und Maschinenbau GmbH

Justus-von-Liebig-Straße 2 + 4

D-27283 Verden

Phone: +49 4231 9646-42

Fax: +49 4231 9646-26

E-mail: info@thom-verden.de

Web: www.thom-verden.de



Excerpt from our references:

